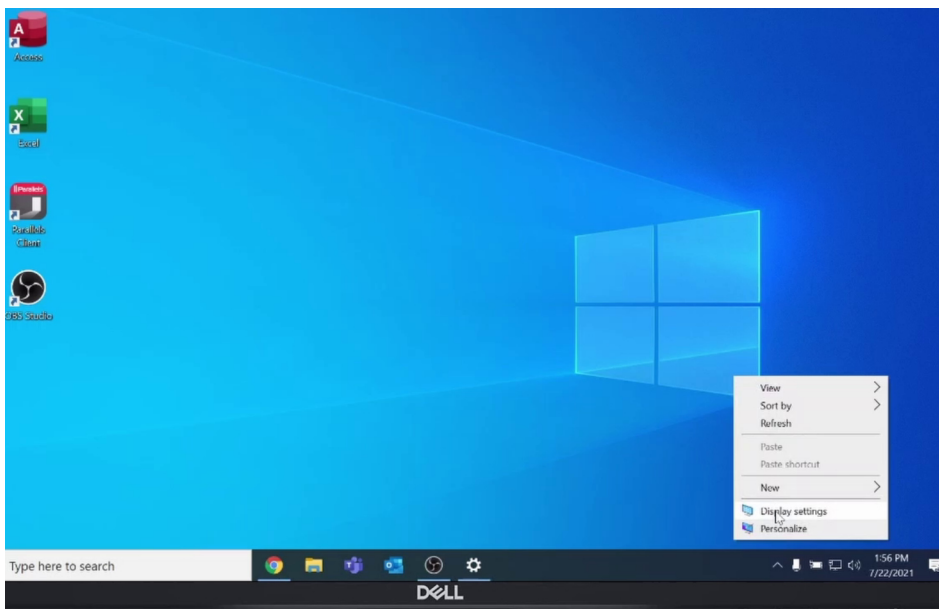


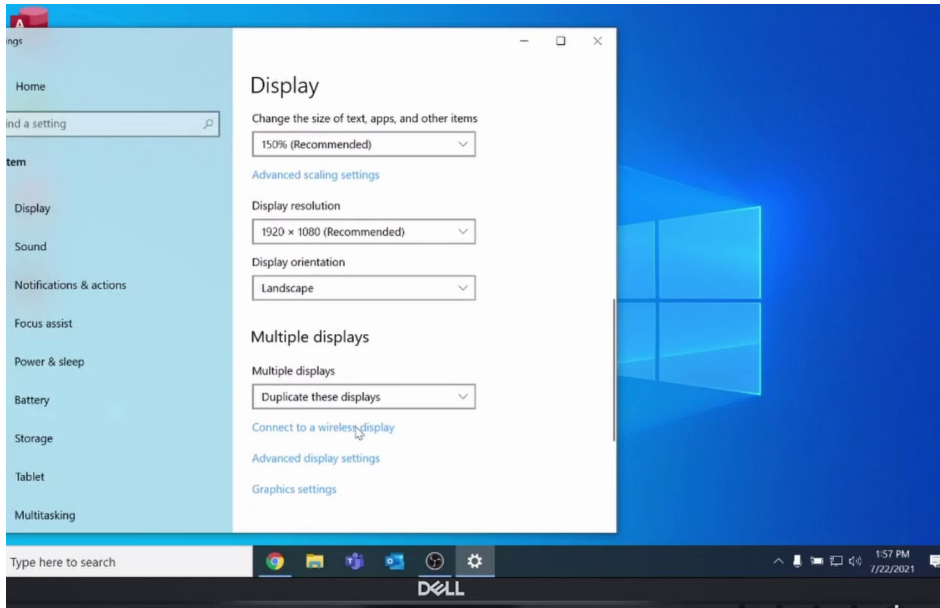


Video Guide for Using the Docking Station

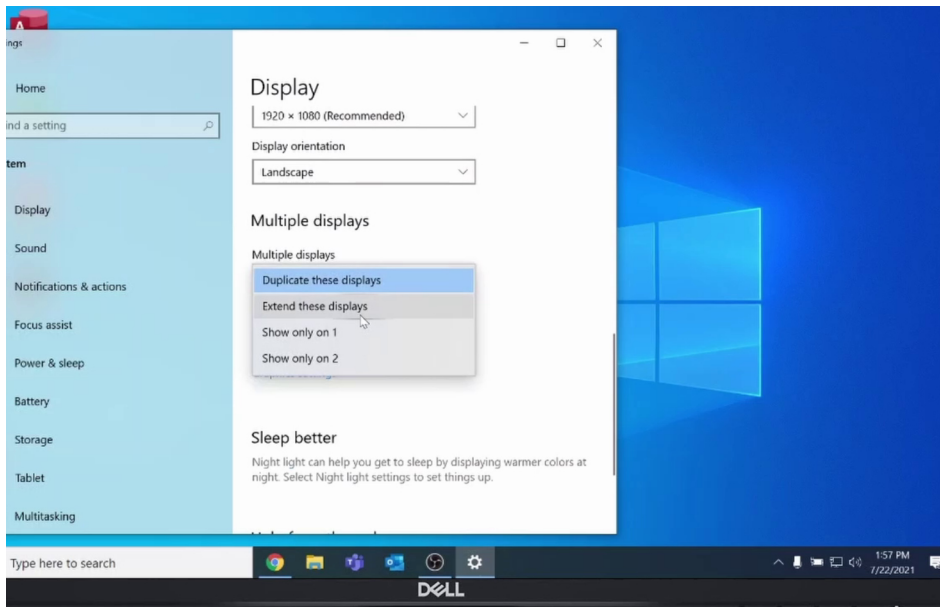


STEP 1:

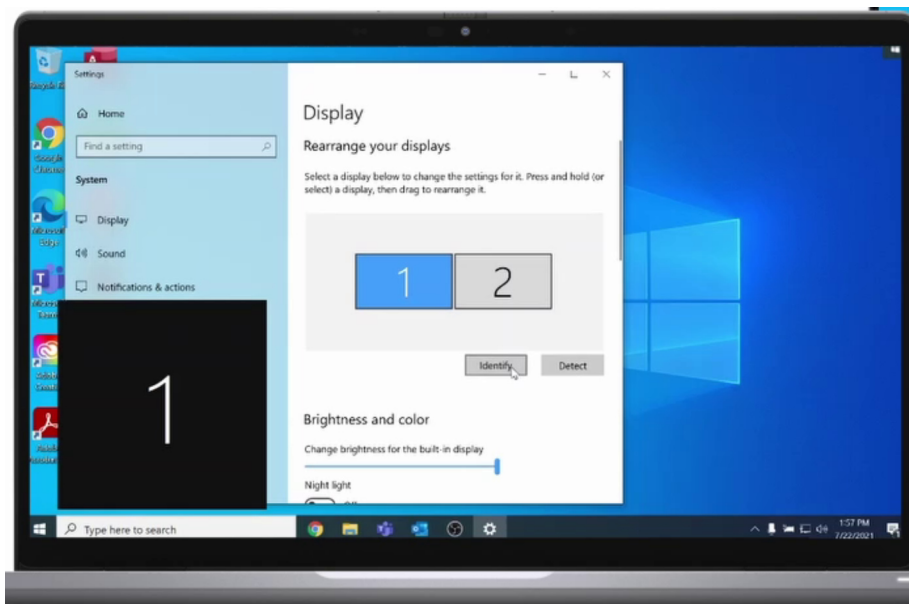
RIGHT-CLICK the desktop and choose **DISPLAY SETTINGS**



STEP 2:
SCROLL DOWN to and stop at **MULTIPLE DISPLAYS**

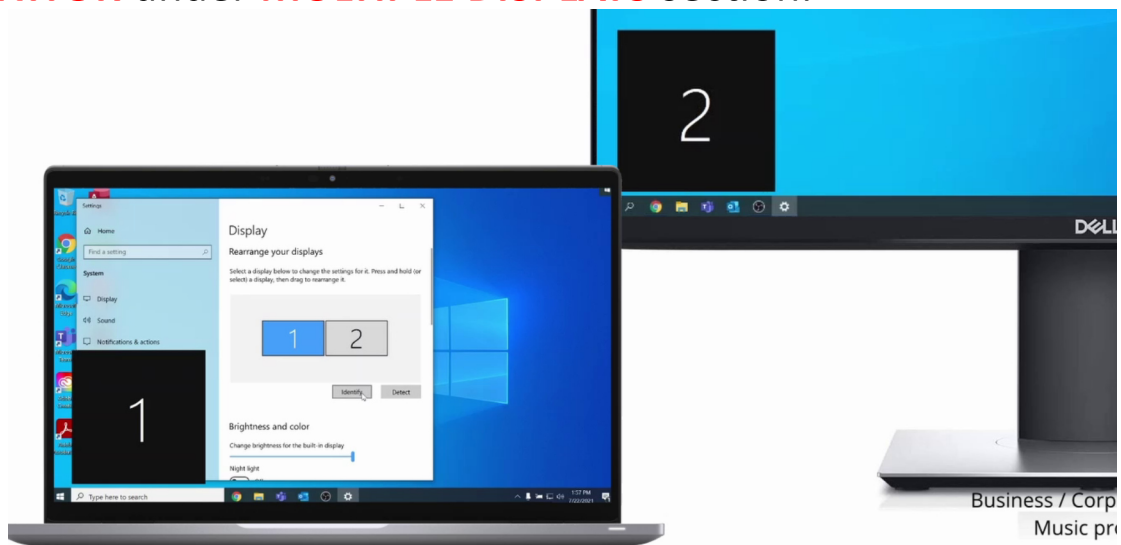


STEP 3:
CLICK DUPLICATE DISPLAYS and choose **EXTEND THESE DISPLAYS**



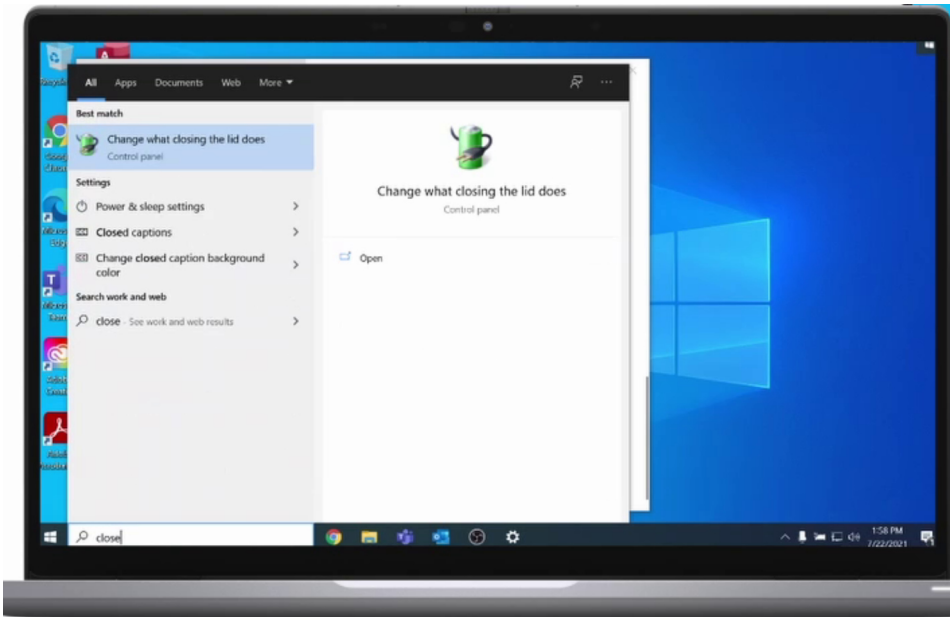
STEP 4:

CLICK IDENTIFY. #1 is the laptop. #2 is the external monitor.
NOTE: if you select #2, you can make it the **MAIN (PRIMARY) MONITOR** under **MULTIPLE DISPLAYS** section.

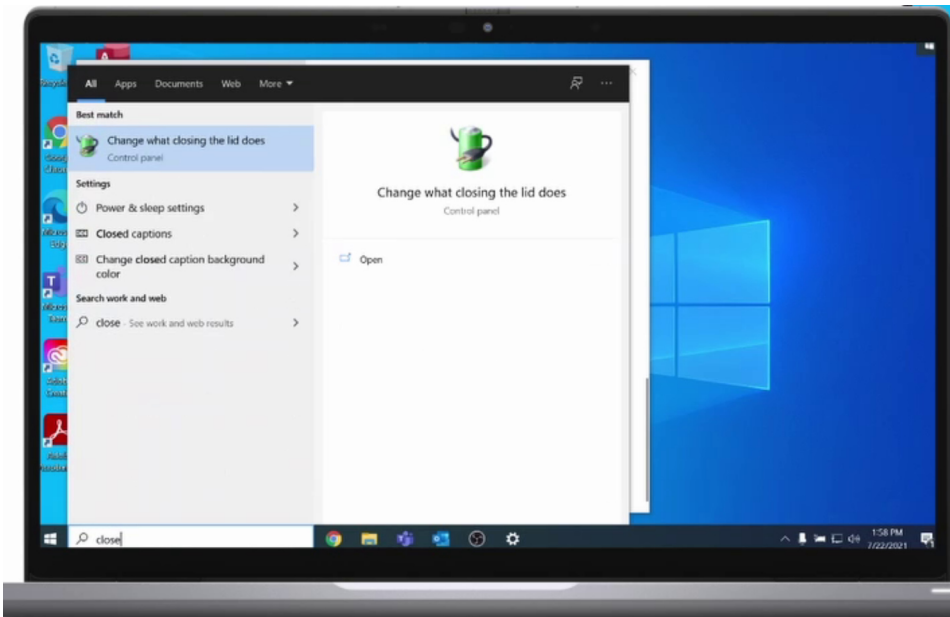


STEP 5:

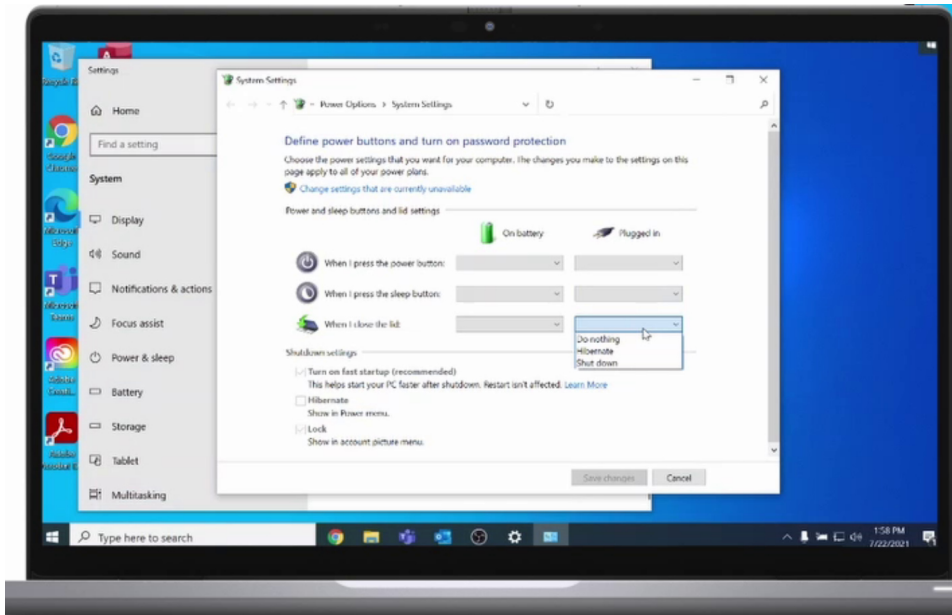
You can drag #1 and #2 to match the layout of your hardware.



STEP 6:
CLICK SEARCH at the bottom and type **CLOSE**.

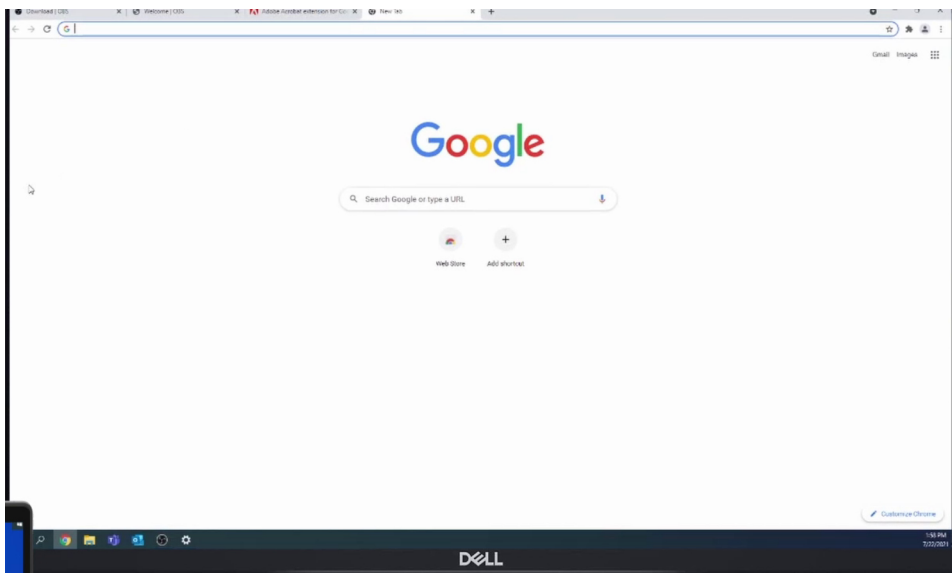


STEP 7:
CLICK OPEN at the right side of the screen.



STEP 8:

Under **PLUGGED IN & WHEN I CLOSE THE LID** chose **DO NOTHING**.
Now you can close the lid and still use the external monitor.



STEP 9:

We did it! Remember the lid **MUST** be open to use the webcam.